



Product Code: 21411

WHOLE GRAIN RICH 2.5OZ MIXED BERRY FLAVORED SCONE DOUGH

Delicious whole grain rich mixed berry flavored scone dough, offered in a unique, pre-cut triangle shape. Simply place on a tray and bake from frozen for optimal convenience. Each scone is 2oz whole grain equivalency.

SPECIFICATIONS & STORAGE

GTIN:	00049800214118
Kosher Certification:	KOF-K
Kosher Status:	DAIRY
Case Count:	108
Master Pack:	CASE
Net Case Weight:	16.875 LB
Gross Case Weight:	18.149 LB
Case Cube:	0.855
Pallet Pattern:	10 TI x 8 HI (80 Cases/Pallet)
Serving Size:	1 SCONE (63 G)
Shelf Life from Manufacture:	210 DAYS
Storage Method:	Keep Frozen
Shelf Life Refrigerated, Prepared:	3 DAYS
Shelf Life Ambient, Prepared:	3 DAYS
Shelf Life Refrigerated, Thawed:	N/A
Shelf Life Ambient, Thawed:	N/A
Master Unit Size:	2.5 OZ
Case Dimensions:	15.0 IN L x 11.94 IN W x 8.25 IN H

PRODUCT INGREDIENTS

WHOLE WHEAT FLOUR, ENRICHED UNBLEACHED WHEAT FLOUR (WHEAT FLOUR, NIACIN, REDUCED IRON, THIAMINE MONONITRATE, RIBOFLAVIN, FOLIC ACID), APPLES, SUGAR, WATER, PALM OIL, OATS, SWEETENED BLUEBERRIES (BLUEBERRIES, SUGAR, SUNFLOWER OIL), EGG YOLKS, STRAWBERRY FLAVORED CRANBERRIES (CRANBERRIES, SUGAR, NATURAL FLAVOR, SUNFLOWER OIL), CONTAINS LESS THAN 2% OF THE FOLLOWING: DEXTROSE, LEAVENING (BAKING SODA, SODIUM ACID PYROPHOSPHATE, MONOCALCIUM PHOSPHATE), NATURAL FLAVOR, SALT, CORN FLOUR, COLORED WITH (BEET JUICE, WATERMELON AND HUITO JUICES), ASCORBIC ACID, RASPBERRY POWDER, CITRIC ACID.

ALLERGENS

CONTAINS: EGGS, WHEAT MAY CONTAIN PEANUTS, TREE NUTS, MILK AND SOY
CONTAINS A BIOENGINEERED FOOD INGREDIENT

TIPS & HANDLING

DO NOT CONSUME RAW SCONE DOUGH. USE SAFE FOOD HANDLING PROCEDURES.
KEEP PRODUCT FROZEN AT 0°F OR BELOW UNTIL READY TO USE. PLACE 20 SCONES (4 X 5) ON FULL SHEET PAN LINED WITH PARCHMENT PAPER. BAKE IN A PREHEATED OVEN AT THE FOLLOWING RECOMMENDED TEMPERATURE (FROZEN & REFRIGERATED BAKE TIMES ARE THE SAME): - RACK OVEN: 350°F FOR 14-18 MINUTES - CONVENTIONAL OVEN: 400°F FOR 24-30 MINUTES - CONVECTION OVEN: 350°F FOR 15-20 MINUTES *BAKE TIMES MAY VARY DEPENDING ON YOUR OVEN.

Nutrition Facts

1 Servings Per Container

Serving Size 1 SCONE (63 g)

Amount Per Serving

Calories **230**

	% Daily Value*
Total Fat 8g	10%
Saturated Fat 3.5g	18%
Trans Fat 0g	
Cholesterol 15mg	6%
Sodium 250mg	11%
Total Carbohydrate 37g	13%
Dietary Fiber 3g	11%
Total Sugars 13g	
Includes 10g Added Sugars	19%
Protein 4g	7%
Vitamin D 0.1mcg	0%
Calcium 20mg	2%
Iron 1.4mg	8%
Potassium 110mg	2%
Thiamin	10%
Riboflavin	6%
Folate	6%

* The % Daily Value (dv) tells you how much a nutrient in a serving of food contributes to a daily diet. 2,000 calories a day is used for general nutrition advice.

100g Nutrition Facts

Calories	324.772
Calories From Fat	96.72
Calories From Saturated Fat	46.225
Protein	5.154 G
Carbohydrates	52.082 G
Sugars	17.804 G
Added Sugars	13.561 G
Sugar Alcohol	0 G
Water	30.195 G
Fat	10.747 G
Saturates	5.136 G
Trans Fat	0.109 G
Cholesterol	24.323 MG
Fiber	4.431 G
Minerals	
Ash	1.822 G
Calcium	27.191 MG
Iron	1.972 MG
Sodium	358.757 MG
Thiamin	0.186 MG
Riboflavin	0.116 MG
Niacin	2.179 MG
Potassium	150.945 MG
Vitamin A	211.066 IU
Vitamin C	4.581 MG
Vitamin D	0.109 MCG
Folic Acid	29.06 MCG

CASE GTIN



00049800214118



Product Code: 21410

WHOLE GRAIN RICH 2.5OZ CINNAMON CHIP SCONE DOUGH

Delicious whole grain rich cinnamon chip scone dough, offered in a unique, pre-cut triangle shape. Simply place on a tray and bake from frozen for optimal convenience. Each scone is 2oz whole grain equivalency.

SPECIFICATIONS & STORAGE

GTIN:	00049800214101
Kosher Certification:	KOF-K
Kosher Status:	DAIRY
Case Count:	108
Master Pack:	CASE
Net Case Weight:	16.875 LB
Gross Case Weight:	18.149 LB
Case Cube:	0.855
Pallet Pattern:	10 TI x 8 HI (80 Cases/Pallet)
Serving Size:	1 Scone (63 G)
Shelf Life from Manufacture:	210 DAYS
Storage Method:	Keep Frozen
Shelf Life Refrigerated, Prepared:	3 DAYS
Shelf Life Ambient, Prepared:	3 DAYS
Shelf Life Refrigerated, Thawed:	N/A
Shelf Life Ambient, Thawed:	N/A
Master Unit Size:	2.5 OZ
Case Dimensions:	15.0 IN L x 11.94 IN W x 8.25 IN H

PRODUCT INGREDIENTS

WHOLE WHEAT FLOUR, ENRICHED UNBLEACHED WHEAT FLOUR (WHEAT FLOUR, NIACIN, REDUCED IRON, THIAMINE MONONITRATE, RIBOFLAVIN, FOLIC ACID), APPLES, WATER, CINNAMON DROPS (SUGAR, PALM OIL OR PALM KERNEL OIL, CINNAMON, NONFAT DRY MILK, SOY LECITHIN (AN EMULSIFIER)), PALM OIL, SUGAR, OATS, EGG YOLKS, CONTAINS LESS THAN 2% OF THE FOLLOWING: LEAVENING (BAKING SODA, SODIUM ACID PYROPHOSPHATE, MONOCALCIUM PHOSPHATE), CINNAMON, SALT, NATURAL FLAVOR, ASCORBIC ACID.

ALLERGENS

CONTAINS: EGGS, MILK, SOY, WHEAT MAY CONTAIN PEANUTS AND TREE NUTS DERIVED FROM BIOENGINEERING

TIPS & HANDLING

DO NOT CONSUME RAW SCONE DOUGH. USE SAFE FOOD HANDLING PROCEDURES. KEEP PRODUCT FROZEN AT 0°F OR BELOW UNTIL READY TO USE. PLACE 20 SCONES (4 X 5) ON FULL SHEET PAN LINED WITH PARCHMENT PAPER. BAKE IN A PREHEATED OVEN AT THE FOLLOWING RECOMMENDED TEMPERATURE (FROZEN & REFRIGERATED BAKE TIMES ARE THE SAME): -RACK OVEN: 350°F FOR 14-18 MINUTES -CONVENTIONAL OVEN: 400°F FOR 24-30 MINUTES -CONVECTION OVEN: 350°F FOR 15-20 MINUTES *BAKE TIMES MAY VARY DEPENDING ON YOUR OVEN.

Nutrition Facts

1 Servings Per Container

Serving Size 1 Scone (63 g)

Amount Per Serving

Calories

240

% Daily Value*

Total Fat 10g	12%
Saturated Fat 5g	25%
Trans Fat 0g	
Cholesterol 15mg	6%
Sodium 250mg	11%
Total Carbohydrate 34g	12%
Dietary Fiber 3g	11%
Total Sugars 10g	
Includes 8g Added Sugars	16%
Protein 4g	7%
Vitamin D 0.1mcg	0%
Calcium 30mg	2%
Iron 1.4mg	8%
Potassium 110mg	2%
Thiamin	10%
Riboflavin	6%
Folate	6%

* The % Daily Value (dv) tells you how much a nutrient in a serving of food contributes to a daily diet. 2,000 calories a day is used for general nutrition advice.

100g Nutrition Facts

Calories	331.621
Calories From Fat	122.556
Calories From Saturated Fat	64.53
Protein	5.158 G
Carbohydrates	47.377 G
Sugars	14.027 G
Added Sugars	11.285 G
Sugar Alcohol	0 G
Water	32.134 G
Fat	13.617 G
Saturates	7.17 G
Trans Fat	0.114 G
Cholesterol	24.372 MG
Fiber	4.457 G
Minerals	
Ash	1.714 G
Calcium	35.755 MG
Iron	2.043 MG
Sodium	359.279 MG
Thiamin	0.192 MG
Riboflavin	0.12 MG
Niacin	2.245 MG
Potassium	150.614 MG
Vitamin A	21.541 IU
Vitamin C	4.913 MG
Vitamin D	0.109 MCG
Folic Acid	29.845 MCG

CASE GTIN



00049800214101

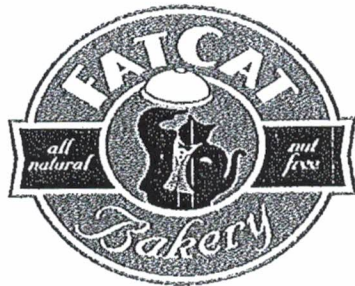
FatCat Bakery Product Nutritional Information- 2019-20

Flavor: **Blueberry Muffin Batter**

Easy to Bake as a "PAN BREAD"

WHOLE GRAIN- Meets School Regulations

Scoop/Bake Pails- "Low Cap" Style Muffins



FC Code: **WGBLUMFN-9#**

Case NET WT 18lbs. 3oz. GROSS WT: 19 lbs. 13oz.

16"x8"x8" box- 80 cases per pallet

TI/Hi: 10/8 Case Cube: .59

UPC Code: 856354000452

GTIN-14: 10856354000459

Nutrition Facts

Servings Per Case: 80

Serving Size: 3.6oz (102g) pre-baked weight

Amounts per Serving

Calories 357

		% of Daily Value *
Total Fat g	14.0	22%
Saturated Fat g	1.5	7%
Trans Fat g	0	
Cholesterol mg	33.2	11%
Sodium mg	185.3	8%
Total Carbohydrates g	55.4	18%
Dietary Fiber g	3.3	13%
Total Sugars g	28.4	
Includes	14.3 g Added Sugar	29%
Protein g	4.6	
Vitamin D mcg	0.08	0.8%
Calcium mg	97.49	10%
Iron mg	1.72	10%
Potassium mg	122.01	3%

* The % Daily Value (DV) tells you how much a nutrient in a serving of food contributes to a daily diet. 2,000 calories a day is used for general nutrition advice.

Product Description/ Contribution

Whole Grain Muffin Batter- Scoop & Bake
2 Pails of Batter/case; Pan Bread 1 Pail = 1 Sheet Pan
All Natural- No Trans Fat- "From Scratch" Taste

SMART SNACK COMPLIANT- NUT FREE FACILITY

MEETS SCHOOL FOODSERVICE REQUIREMENTS

Grain Breads:	2
% Calories from Sat Fat:	3.7%
% weight of Sugars:	27.5%

I certify that this information is true and correct

Erik Finnerty, CEO/Co-Founder Date: 9.30.19

All Natural Ingredients

FatCat Whole Wheat Flour Blend (52% whole wheat pastry flour, 48% unbleached enriched wheat flour (wheat flour, niacin, reduced iron, thiamine mononitrate, riboflavin, folic acid, malted barley flour)), sugar, milk, wild blueberries, vegetable oil, eggs, baking powder (sodium acid pyrophosphate, sodium bicarbonate, mono calcium phosphate) and salt.

Allergen Information

CONTAINS Wheat, Milk, Eggs. This product DOES NOT CONTAIN Nuts, Trans Fat, or Preservatives. Fat Cat Bakery is a NUT-FREE FACILITY.

Manufactured By

Fat Cat Bakery Artisan Pastries

Sacramento, CA 95828 FatCatBakery.com

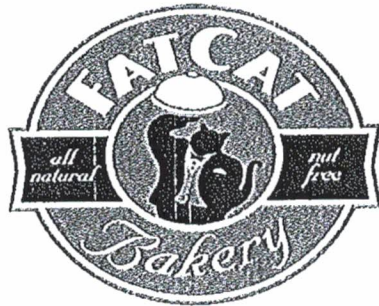
Shelf Life

Frozen shelf life- 0 degrees or below: 12 months
Refrigerated shelf life- store pail up to 5 days
Baked shelf life: up to 3 days (covered)

Baking Information

For MUFFINS: 2 GB portion, use standard Hamilton Beach #8 GRAY Scoop. TEST YOUR SCOOP SIZE! Scoop batter so scoop is almost full, then fill muffin cup that is pre-sprayed with pan release. Bake according to directions on the pail. Will be "Low Cap" style muffin. For PAN BREAD: pour entire 9 lb pail into standard sheet pan, lined with parchment and sprayed with pan release. Bake according to directions on pail. For 2 GB: cut standard sheet pan into 40 pieces (7 cuts on long side; 4 cuts on short side- so you have 8x5 = 40 portions)

FatCat Bakery Product Nutritional Information- 2019-20



Flavor: **Fresh Banana Muffin Batter**

Easy to Bake as a "PAN BREAD"

WHOLE GRAIN- Meets School Regulations
Scoop/Bake Pails- "Low Cap" Style Muffins

FC Code: **WGBANMFN-9#**

Case NET WT 18lbs. 3oz. GROSS WT: 19 lbs. 13oz.
16"x8"x8" box- 80 cases per pallet
TI/Hi: 10/8 Case Cube: .59
UPC Code: 856354000414
GTIN-14: 10856354000411

Nutrition Facts

Servings Per Case: 72+

Serving Size: 3.9oz (110.5g) pre-baked weight

Amounts per Serving

Calories 358

		% of Daily Value *
Total Fat g	13.0	20%
Saturated Fat g	1.4	7%
Trans Fat g	0	
Cholesterol mg	30.8	10%
Sodium mg	182.7	8%
Total Carbohydrates g	57.9	19%
Dietary Fiber g	3.1	12%
Total Sugars g	31.1	
includes	13.5 g Added Sugar	27%
Protein g	4.7	
Vitamin D mcg	0.08	0.8%
Calcium mg	93.06	9%
Iron mg	1.68	9%
Potassium mg	184.85	5%

* The % Daily Value (DV) tells you how much a nutrient in a serving of food contributes to a daily diet. 2,000 calories a day is used for general nutrition advice.

Product Description/ Contribution

Whole Grain Muffin Batter- Scoop & Bake
2 Pails of Batter/case; Pan Bread 1 Pail = 1 Sheet Pan
All Natural- No Trans Fat- "From Scratch" Taste
SMART SNACK COMPLIANT- NUT FREE FACILITY

MEETS SCHOOL FOODSERVICE REQUIREMENTS

Grain Breads: 2
% Calories from Sat Fat: 3.6%
% weight of Sugars: 28.5%

I certify that this information is true and correct

Erik Finnerty, CEO/Co-Founder Date: 9.30.19

All Natural Ingredients

FatCat Whole Wheat Flour Blend (52% whole wheat pastry flour, 48% unbleached enriched wheat flour (wheat flour, niacin, reduced iron, thiamine mononitrate, riboflavin, folic acid, malted barley flour)), sugar, fresh bananas, milk, vegetable oil, eggs, baking powder (sodium acid pyrophosphate, sodium bicarbonate, mono calcium phosphate), molasses and salt.

Allergen Information

CONTAINS Wheat, Milk, Eggs. This product DOES NOT CONTAIN Nuts, Trans Fat, or Preservatives. Fat Cat Bakery is a NUT-FREE FACILITY.

Manufactured By

Fat Cat Bakery Artisan Pastries

Sacramento, CA 95828 FatCatBakery.com

Shelf Life

Frozen shelf life- 0 degrees or below: 12 months
Refrigerated shelf life- store pail up to 5 days
Baked shelf life: up to 3 days (covered)

Baking Information

For MUFFINS: 2 GB portion, use standard Hamilton Beach #8 GRAY Scoop. TEST YOUR SCOOP SIZE! Scoop batter so scoop is full, then fill muffin cup that is pre-sprayed with pan release. Bake according to directions on the pail. Will be "Low Cap" style muffin. For PAN BREAD: pour entire 9 lb pail into standard sheet pan, lined with parchment and sprayed with pan release. Bake according to directions on pail. For 2 GB: cut standard sheet pan into 36 pieces (8 cuts on long side; 3 cuts on short side- 9x4 portions = 36 svgs)



LENDERS

Bagel

BAGEL, WHITE WHOLE GRAIN 2 OZ SLICED THAW & SERVE FROZEN

1788165



12/6/2 OZ (\$0.19 / oz)

ADD TO ORDER

Quantity Available

CS: 81

Product Description

Additional Description

PRODUCT OF THE US.

Ingredients

INGREDIENTS: WHOLE WHEAT FLOUR, WATER, SUGAR, VITAL WHEAT GLUTEN, YEAST. CONTAINS 2 OR LESS OF: SALT, SORBIC ACID PRESERVATIVE, DISTILLED MONOGLYCERIDES, DISTILLED MONOGLYCERIDES, SOYBEAN OIL, PRESERVATIVES CALCIUM PROPIONATE, DOUGH CONDITIONERS CALCIUM SULFATE, L-CYSTEINE, ENZYMES WHEAT FLOUR, ENZYMES, XANTHAN GUM, YELLOW CORN MEAL.

Product Information

Class: 26 - GROCERY, REF & FZN

Category: 216 - BREAD & DOUGH, REF & FZN

Group: 1420 - BAGELS, THAW & SERVE, FROZEN

Manufacturer Information

ACELERADA LLC

Manufacturer Product #: 7680000074

Preparation & Cooking

Preparations and Cooking Instructions

PLEASE FOLLOW PREPARATION INSTRUCTIONS AS PRINTED ON THE CONSUMER PACKAGING.

Handling Instructions

Follow storage and usage instructions as printed on consumer packaging.

Nutrition Facts

72 Servings Per Container

Serving Size (57gr)

Amount Per Serving

Calories 140

	% Daily Value *
Total Fat 1g	1%
Saturated Fat 0g	0%
Trans Fat 0g	
Cholesterol 0mg	0%
Sodium 160mg	7%
Total Carbohydrate 28g	10%
Dietary Fiber 4g	14%
Total Sugars 5g	
Includes 0g Added Sugars	0%
Protein 6g	
Vitamin A	0%
Vitamin C	0%
Calcium	2%
Iron	0%

Supplemental Facts

	% Daily Value *
Polyunsaturated Fat 0g	0%
Monosaturated Fat 0g	0%
Potassium 140mg	2%

* The % Daily Value (DV) tells you how much a nutrient in a serving of food contributes to a daily diet. 2,000 calories a day is used for general nutrition advice.



GENERAL MILLS
Convenience
& Foodservice



Pillsbury™ Frozen Biscuit Dough Easy Split™ Southern Style Reduced Sodium 2.2 oz

UPC: 094562315245

Information Accurate as of: **January 15, 2021**

DESCRIPTION

Pre-portioned Southern Style biscuit dough in an easy, freezer-to-oven format from Pillsbury™. Formulated to produce light and fluffy 2.2 ounce biscuits with rich, buttery flavor and scratch-like flavor, texture, and appearance. Great for both sweet and savory uses and easy to separate for sandwich applications. For crediting in USDA Child Nutrition Programs: 2 ounce equivalent grain. This non-whole grain product may qualify with a whole grain exemption.

Case GTIN: 10094562315242

Unit Weight: **2.2 OZ**

Units per case: **216**

Nutrition Facts

1 Biscuit (62g)
Serving Size

Calories
per serving

190

Amount/serving	% Daily Value**	Amount/serving	% Daily Value**
Total Fat 8g	10%	Sodium 430mg	19%
Saturated Fat 4g	20%	Total Carbohydrate 25g	9%
Trans Fat 0g		Dietary Fiber <1g	3%
Cholesterol 0mg	0%	Total Sugars 2g	
		Includes 1g Added Sugars	2%
		Protein 4g	
Vitamin D	0%	Calcium	8%
Potassium	4%	Iron	8%

**The % Daily Value (DV) tells you how much a nutrient in a serving of food contributes to a daily diet. 2,000 calories a day is used for general nutrition advice.

*Not a significant nutrient source

Nutrition Facts

Calories
Approx Per 100g

302

Amount/100g	% Daily Value**	Amount/100g	% Daily Value**
Total Fat 13g		Sodium 687mg	
Saturated Fat 6g		Total Carbohydrate 41g	
Trans Fat 0g		Dietary Fiber <1g	
Cholesterol 1mg		Total Sugars 4g	
		Includes 2g Added Sugars	
		Protein 6g	
Vitamin D		Calcium	
Potassium		Iron	

**The % Daily Value (DV) tells you how much a nutrient in a serving of food contributes to a daily diet. 2,000 calories a day is used for general nutrition advice.

*Not a significant nutrient source

INGREDIENTS & ALLERGENS: ENRICHED FLOUR BLEACHED (WHEAT FLOUR, NIACIN, FERROUS SULFATE, THIAMIN MONONITRATE, RIBOFLAVIN, FOLIC ACID), WATER, SOYBEAN OIL, HYDROGENATED SOYBEAN OIL, BUTTERMILK, SUGAR, SODIUM ALUMINUM PHOSPHATE, SALT, BAKING SODA, DATEM, CALCIUM ACID PYROPHOSPHATE, POTASSIUM BICARBONATE, PALM OIL, WHEAT PROTEIN ISOLATE, PECTIN, CREAM, NATURAL FLAVOR. CONTAINS WHEAT AND MILK INGREDIENTS.

KOSHER APPROVAL: OU/DAIRY

Nutritional information is subject to change. See product label to verify ingredients and allergens. Do not eat raw dough or batter.

This product profile is correct through the date above. Because product formulations and related product attributes may change, this information is subject to change. Search results are based on the system information available. Nutritional information is subject to change. See product label on package to verify ingredients and allergens.

BUTTERY MAPLE



NUTRITION FACTS Servings: 1, Serv. size: 1 waffle (68g),
Amount per serving: Calories 250, Total Fat 9g (14% DV),
Sat. Fat 4g (20% DV), Trans Fat 0g, Cholest. 44mg (15% DV),
Sodium 290mg (12% DV), Total Carb. 37g (12% DV), Fiber
2g (8% DV), Total Sugars 15g, Protein 6g, Vit. D (0% DV),
Calcium (3% DV), Iron (8% DV), Potas. (2% DV).



INGREDIENTS: Organic Whole Wheat Flour, Organic Enriched Wheat Flour (Organic Wheat Flour, Niacin, Reduced Iron, Thiamine Mononitrate, Riboflavin, Folic Acid), Beet Sugar, Butter, Whole Eggs, Palm Fruit Oil, Yeast, Non-Fat Milk, Salt, Natural Flavors, Distilled Monoglycerides, Enzymes.

CONTAINS: MILK, EGG, AND WHEAT.

SWEET CINNAMON



NUTRITION FACTS Servings: 1, Serv. size: 1 waffle (68g),
Amount per serving: Calories 250, Total Fat 9g (14% DV),
Sat. Fat 4g (20% DV), Trans Fat 0g, Cholest. 44mg (15% DV),
Sodium 290mg (12% DV), Total Carb. 37g (12% DV), Fiber
2g (8% DV), Total Sugars 15g, Protein 6g, Vit. D (0% DV),
Calcium (3% DV), Iron (8% DV), Potas. (2% DV).



INGREDIENTS: Organic Whole Wheat Flour, Organic Enriched Wheat Flour (Organic Wheat Flour, Niacin, Reduced Iron, Thiamine Mononitrate, Riboflavin, Folic Acid), Beet Sugar, Butter, Whole Eggs, Palm Fruit Oil, Yeast, Non-Fat Milk, Salt, Cinnamon, Natural Flavors, Distilled Monoglycerides, Enzymes.

CONTAINS: MILK, EGG, AND WHEAT.

WILD BLUEBERRY



NUTRITION FACTS Servings: 1, Serv. size: 1 waffle (68g),
Amount per serving: Calories 250, Total Fat 9g (14% DV),
Sat. Fat 4g (20% DV), Trans Fat 0g, Cholest. 44mg (15% DV),
Sodium 290mg (12% DV), Total Carb. 37g (12% DV), Fiber
2g (8% DV), Total Sugars 15g, Protein 6g, Vit. D (0% DV),
Calcium (3% DV), Iron (8% DV), Potas. (2% DV).



INGREDIENTS: Organic Whole Wheat Flour, Organic Enriched Wheat Flour (Organic Wheat Flour, Niacin, Reduced Iron, Thiamine Mononitrate, Riboflavin, Folic Acid), Beet Sugar, Butter, Whole Eggs, Blueberry Pieces (Sugar, Wheat Flour, Canola Oil, Wheat Starch, Dextrose, Colored with Fruit Juice, Natural Flavor, Blueberry Solids, Sodium Bicarbonate), Palm Fruit Oil, Yeast, Non-Fat Milk, Salt, Natural Flavors, Distilled Monoglycerides, Enzymes.

CONTAINS: MILK, EGG, AND WHEAT.

CERTIFICATION/CREDITING STATEMENT

I certify that the above information is true and correct and that a 2.4 ounce serving of the above product (ready for serving) contains 2 servings of ounce equivalent Grains/Breads for the Child Nutrition Programs when prepared according to the directions.

Peter Jacobson, CEO

CERTIFICATION DATE

1/1/2023



FUNNEL CAKE FACTORY

Waffle

WAFFLE, DUTCH WHOLE-GRAIN-RICH HEAT & SERVE FROZEN 5"

9558891

48/2.85 OZ

ADD TO ORDER

Quantity Available
CS: 383

Next Expected Restock
08/04

Product Description

Additional Description
PRODUCT OF THE US. 51% WHOLE-GRAIN-RICH.
Ingredients

WHOLE WHEAT FLOUR, SOYBEAN OIL, ENRICHED WHEAT FLOUR WHEAT FLOUR, NIACIN, IRON, THIAMINE MONONITRATE, RIBOFLAVIN, FOLIC ACID, WATER, SUGAR, CONTAINS 2 OR LESS OF THE FOLLOWING: ARTIFICIAL FLAVOR, CELLULOSE GUM, DEFATTED SOY FLOUR, EGG YOLKS, LEAVENING BAKING SODA, MONOCALCIUM PHOSPHATE, SODIUM ACID PYROPHOSPHATE, MONO- AND DIGLYCERIDES, NONFAT MILK, SALT.

Product Information
Class: 26 - GROCERY, REF & FZN
Category: 218 - MUFFINS & BREAKFAST PASTRY, REF & FZN
Group: 1448 - PANCAKE, WAFFLE, FRENCH TOAST, THAW & SERVE, FROZEN

Manufacturer Information
& J SNACK FOODS
Manufacturer Product #: 4521

Preparation & Cooking

Preparations and Cooking Instructions
OVEN ?????? 1) PREHEAT OVEN TO 450F.* 2) REMOVE FROZEN PRODUCT FROM CASE AND PLACE ON TRAY. THEN HEAT FOR 3-4 MINUTES.* 3) SPRINKLE WITH CONFECTIONER??????S SUGAR OR ANY OTHER TOPPING. FRYER ?????? 1) PREHEAT FRYER TO 375F.* 2) REMOVE FROZEN PRODUCT FROM CASE AND PLACE IN FRYER FOR 30 SECONDS.* 3) SPRINKLE WITH CONFECTIONER??????S SUGAR OR ANY OTHER TOPPING. * HEATING TIMES AND TEMPERATURES MAY VARY.

Handling Instructions
Keep Frozen (0 F or below). Shelf life up to one year when stored properly.
Serving Suggestions:
Bake and Serve.

Shipping Information

Physical Attributes				Storage Information	
Gross Weight:	9.48 LB	Length:	15.4 IN	USF Storage:	FROZEN 0
Net Weight:	8.57 LB	Cube:	1.039 CF	Min. Temperature:	-10 fa
Height:	10.5 IN	Catch Weight:	No	Max. Temperature:	15 fa
Width:	11.1 IN				

Nutrition Facts

48 Servings Per Container	
Serving Size	(2.9oz)
Amount Per Serving	
Calories	330
% Daily Value *	
Total Fat 19g	24%
Saturated Fat 3g	15%
Trans Fat g	
Cholesterol 15mg	5%
Sodium 330mg	14%
Total Carbohydrate 38g	14%
Dietary Fiber 3g	11%
Total Sugars 12g	
Includes 0g Added Sugars	0%
Protein 4g	
Vitamin A	0%
Vitamin C	0%
Calcium	2%
Iron	8%

Supplemental Facts

% Daily Value *	
Vitamin D 0mcg	0%
Potassium 120mg	2%

* The % Daily Value (DV) tells you how much a nutrient in a serving of food contributes to a daily diet. 2,000 calories a day is used for general nutrition advice.



1173

Conagra Foodservice
222 W. Merchandise Mart Plaza, Suite 1300
Chicago, IL 60654
TEL: 402-240-4000

The Max Pancakes with Cinnamon Glaze (IW) 80-30Z UPC 94643 04442

Nutritional Information:

Nutrition Facts	
about 80 servings per container	
Serving size	2 Pancakes (85g)
Amount per serving	
Calories	210
% Daily Value*	
Total Fat 6g	8%
Saturated Fat 1g	5%
Trans Fat 0g	
Polyunsaturated Fat 3.5g	
Monounsaturated Fat 1.5g	
Cholesterol 5mg	2%
Sodium 300mg	13%
Total Carbohydrate 36g	13%
Dietary Fiber 3g	11%
Total Sugars 11g	
Includes 11g Added Sugars	22%
Protein 4g	
Vitamin D 0mcg	0%
Calcium 40mg	4%
Iron 1.4mg	8%
Potassium 0mg	0%
<small>*The % Daily Value tells you how much a nutrient in a serving of food contributes to a daily diet. 2,000 calories a day is used for general nutrition advice.</small>	
<small>Calories per gram: Fat 9 Carbohydrate 4 Protein 4</small>	

26% calories from fat, 4% calories from Sat Fat, 13% sugar by weight

ALLERGENS	Egg, Milk, Wheat, Soy ✓
Product Facts	
Frozen Shelf Life	360 Days
Case Dimensions (LxWxH)	15.688 x 12.063 x 11.625
Case Cube (ft3)	1.273
Pattern Tie x High = Total cases	10 x 7 = 70
Gross Wt (lbs)	15.889
Net Wt (lbs)	14.990
Kosher	Not a Kosher Product
COUNTRY OF ORIGIN INFORMATION	
Finished Product	USA
PROGRAMS PRODUCT QUALIFIES FOR	
HUSC	Yes
35 10 35	Yes
Smart Snacks	No
Buy American	Yes

This specification was last updated on 4/12/2023

OTHER GTIN #	
Case	20094643044426
Each	60094643044424
Pallet	50094643044427

CHILD NUTRITION IDENTIFICATION NOT CN LABELED

This product is not CN Labeled, however, we certify the above is true and that one 3 oz serving contributes 2.25 equivalent grains towards child nutrition meal pattern requirements. This product has not been evaluated by the FNS, USDA.

WHOLE GRAIN CONTRIBUTION

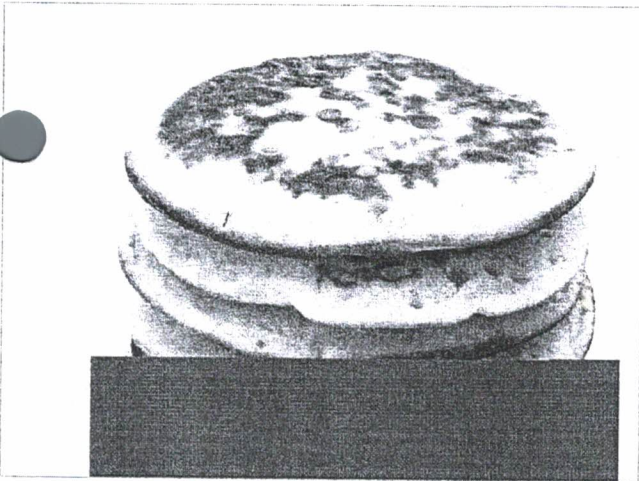
The weight of all grain ingredients is at minimum 32g. There are at least 17g of whole grain in the product providing at least 51% whole grain per serving.

HARD BID SPEC

2 pieces of frozen Pancakes with a cinnamon glaze. Minimum portion weight of 3.0 oz. Product individually wrapped. Pancakes must contain 2 equivalent grains. Minimum of 210 Calories. Packed 80, 2 pack 3.0 oz. portions per case. The Max only - 94643-04442.

Sue E. Holbert

Sue E. Holbert, MS, RDN
Food Safety Quality Customer Support
SpecsandInquiries@conagra.com



EGGO

Pancake

PANCAKE, MAPLE WHOLE-GRAIN-RICH COOKED
FROZEN POUCH MINI

7613524

72/3.03 OZ

Quantity Available
CS: Out of Stock

Next Expected Restock
07/26

Product Description

Additional Description
PRODUCT OF THE US. EGGO PANCAKES MINIS MAPLE FLAVORED 3.03 OZ/72 CT EGGO PANCAKES

Ingredients
WHOLE WHEAT FLOUR, WATER, SUGAR, VEGETABLE OIL SOYBEAN, CANOLA AND/OR PALM, BUTTERMILK, EGGS, CONTAINS 2 OR LESS OF LEAVENING BAKING SODA, SODIUM ALUMINUM PHOSPHATE, MONOCALCIUM PHOSPHATE, NATURAL FLAVORS, FRUCTOSE, SALT, LECITHIN. VITAMINS AND MINERALS: REDUCED IRON, VITAMIN A PALMITATE, VITAMIN PYRIDOXINE HYDROCHLORIDE, VITAMIN B12.

Product Information
Class: 26 - GROCERY, REF & FZN
Category: 218 - MUFFINS & BREAKFAST PASTRY, REF & FZN
Group: 1448 - PANCAKE, WAFFLE, FRENCH TOAST, THAW & SERVE, FROZEN

Manufacturer Information
KELLOGG SALES COMPANY
Manufacturer Product #: 3800092562

Preparation & Cooking

Preparations and Cooking Instructions
KELLOGG'S EGGO BITES FROZEN MINI PANCAKES MUST BE HEATED IN THE OVEN OR THAWED AND SERVED PRIOR TO CONSUMPTION

Handling Instructions
Frozen

Nutrition Facts

1 Servings Per Container		
Serving Size	(86gr)	
Amount Per Serving		
Calories	200	
		% Daily Value *
Total Fat	6g	8%
Saturated Fat	1g	5%
Trans Fat	g	
Cholesterol	10mg	3%
Sodium	320mg	14%
Total Carbohydrate	36g	13%
Dietary Fiber	4g	13%
Total Sugars	12g	
Includes 0g Added Sugars		0%
Protein	4g	
Vitamin A	0%	
Vitamin C	0%	
Calcium	4%	
Iron	20%	

Supplemental Facts

		% Daily Value *
Vitamin D	0mcg	0%
Potassium	140mg	2%

* The % Daily Value (DV) tells you how much a nutrient in a serving of food contributes to a daily diet. 2,000 calories a day is used for general nutrition advice.



FLOWERS FOODS SPECIALTY GROUP

English Muffin

ENGLISH MUFFIN, WHOLE-GRAIN-RICH 2 OZ FORK SPLIT
BAKED BAG FROZEN

3457845



6/12/2 OZ (\$0.15 / oz)

ADD TO ORDER

Quantity Available
CS: 32

Next Expected Restock
07/18

Product Description

Additional Description

THESE FORK-SPLIT, 51% WHOLE GRAIN RICH ENGLISH MUFFINS ARE SCHOOL COMPLIANT. PULL APART FOR EASY TOASTING, BREAKFAST SANDWICHES OR EGGS BENEDICT. IDEAL FOR SCHOOLS, HOTELS, BREAKFAST CATERING OR QSR.

Ingredients

WATER, WHOLE GRAIN WHEAT FLOUR, ENRICHED BLEACHED WHEAT FLOUR WHEAT FLOUR, MALTED BARLEY FLOUR, NIACIN, REDUCED IRON, THIAMINE MONONITRATE, RIBOFLAVIN, FOLIC ACID, YEAST, CONTAINS LESS THAN 2 OF: SUGAR, DATEM, CITRIC ACID, ASCORBIC ACID, DEGERMED YELLOW CORN FLOUR, DEGERMED YELLOW CORNMEAL, FUMARIC ACID, CALCIUM PROPIONATE AND POTASSIUM SORBATE PRESERVATIVES, SALT, SOYBEAN OIL, VINEGAR, ENZYMES, WHEAT GLUTEN.

Product Information

Class: 26 - GROCERY, REF & FZN

Category: 216 - BREAD & DOUGH, REF & FZN

1143 - ENGLISH MUFFIN FROZEN

Nutrition Facts

72 Servings Per Container

Serving Size (62gr)

Amount Per Serving

Calories **130**

	% Daily Value *
Total Fat 1g	2%
Saturated Fat 0g	0%
Trans Fat 0g	
Cholesterol 0mg	0%
Sodium 240mg	10%
Total Carbohydrate 25g	8%
Dietary Fiber 2g	8%
Total Sugars 1g	
Includes 0g Added Sugars	0%

Iron 6%

Supplemental Facts

	% Daily Value *
Potassium 91mg	2%

* The % Daily Value (DV) tells you how much a nutrient in a serving of food contributes to a daily diet. 2,000 calories a day is used for general nutrition advice.

Report Discrepancies

Preparation & Cooking

Preparations and Cooking Instructions

PRODUCT IS FULLY BAKED. THAW OVERNIGHT IN POLY BAG AND SERVE.

Handling Instructions

Keep frozen until ready to use. Thaw overnight at room temperature. Shelf life at room temperature - 5-7 days.

Serving Suggestions:

English Muffins made with 51% Whole Grains are perfect for school breakfast and lunch programs. Also great for other occasions calling for a tasty English Muffin. Use for sandwiches or serve toasted.

Ingredients, Allergens & Nutrition Information

IMPORTANT: Product information, including ingredients, allergens and nutritional information, is provided by manufacturers/suppliers, and includes information from the Global Data Synchronization Network (GDSN) and other third party sources such

MENU



RICH'S

Donut

DONUT, YEAST HOLE WHOLE-GRAIN-RICH .41 OZ
BULK FROZEN

1761161



384/41 OZ

ADD TO ORDER

Quantity Available
CS: 65

Next Expected Restock
07/29

Product Description

Additional Description

56% WHOLE GRAIN RICH YEAST DONUT HOLES MADE WITH ENRICHED WHOLE GRAIN FLOUR.

Ingredients

WHOLE WHEAT FLOUR, ENRICHED UNBLEACHED WHEAT FLOUR WHEAT FLOUR, NIACIN, IRON AS FERROUS SULFATE, THIAMINE MONONITRATE, ENZYME, RIBOFLAVIN, FOLIC ACID, PALM OIL, WATER, WHEY A MILK DERIVATIVE, DEXTROSE, YEAST, SOYBEAN OIL, CONTAINS LESS THAN 2 OF THE FOLLOWING: SALT, LEAVENING SODIUM ACID PYROPHOSPHATE, BAKING SODA, DEFATTED SOY FLOUR, DISTILLED MONOGLYCERIDES, CARRAGEENAN.

Product Information

Class: 26 - GROCERY, REF & FZN

Category: 217 - DESSERTS, BAKERY, OTHER, REF & FZN

Group: 1442 - DONUTS, THAW & SERVE, FROZEN

Manufacturer Information

RICH PRODUCTS CORPORATION
Manufacturer Product #: 02725

Preparation & Cooking

Preparations and Cooking Instructions

1. Place on lined sheet pan and thaw for 30-60 minutes at room temperature. 2. Heat in oven at 375 F for 2-3 minutes. 3. Finish: Glaze or roll in granulated sugar immediately, or ice when cool. Keep frozen at 0F (-18C) or below.

Handling Instructions

Keep Frozen

Serving Suggestions:

Thaw, heat in oven, glaze and serve

Nutrition Facts

76 Servings Per Container

Serving Size (55gr)

Amount Per Serving

Calories 220

		% Daily Value *
Total Fat	12g	15%
Saturated Fat	5g	27%
Trans Fat	0g	
Cholesterol	0mg	0%
Sodium	250mg	11%
Total Carbohydrate	24g	9%
Dietary Fiber	2g	7%
Total Sugars	5g	
Includes 0g Added Sugars		0%
Protein	4g	
Vitamin A		0%
Vitamin C		0%
Calcium		0%
Iron		6%

Supplemental Facts

	% Daily Value *
Vitamin D .5mcg	2%
Ash 1.9337g	
Niacin 4mg	4%
Pantothenic Acid 0mg	0%
Potassium 80mg	2%
Thiamin 6mg	6%

* The % Daily Value (DV) tells you how much a nutrient in a serving of food contributes to a daily diet. 2,000 calories a day is used for general nutrition advice.

Report Discrepancies

Shipping Information

Physical Attributes

Gross Weight: 11.49 LB Length: 19.813 IN
Net Weight: 9.84 LB Cube: 1.618 CF
Height: 10.75 IN Catch Weight: No
Width: 13.125 IN

Storage Information

USF Storage: FROZEN 0
Min. Temperature: -10 fa
Max. Temperature: 15 fa



CHEF PIERRE

Muffin

MUFFIN, DOUBLE CHOCOLATE WHOLE-GRAIN-RICH 4 OZ 1W FROZEN

3433867

24/4 OZ

ADD TO ORDER

Quantity Available
CS: 345

Next Expected Restock
07/29

Product Description

Additional Description

51% WHOLE GRAIN RICH

Ingredients

INGREDIENTS: WHEAT FLOUR WHOLE WHEAT FLOUR, ENRICHED BLEACHED FLOUR WHEAT FLOUR, NIACIN, IRON, THIAMINE MONONITRATE, RIBOFLAVIN, FOLIC ACID, WATER, SUGAR, VEGETABLE OIL SOYBEAN, CANOLA, SEMI-SWEET CHOCOLATE SUGAR, CHOCOLATE LIQUOR, COCOA BUTTER, SOY LECITHIN, VANILLA, EGGS, COCOA PROCESSED WITH ALKALI, CONTAINS 2 OR LESS: POTASSIUM SORBATE PRESERVATIVE, LEAVENING BAKING SODA, SODIUM ALUMINUM PHOSPHATE, MONOCALCIUM PHOSPHATE, MODIFIED CORN STARCH, CORN STARCH, LACTYLIC OLEATE, SALT, MONO- AND DIGLYCERIDES, XANTHAN GUM, DIMETHYL STEAROYL LACTYLATE, ARTIFICIAL FLAVOR, ENZYME, WHEY. CONTAINS: WHEAT, EGGS, MILK

Product Information

Class: 26 - GROCERY, REF & FZN

Category: 218 - MUFFINS & BREAKFAST PASTRY, REF & FZN

Group: 1446 - MUFFINS, THAW & SERVE, FROZEN

Manufacturer Information

SARA LEE FROZEN BAKERY LLC
Manufacturer Product #: 41324

Preparation & Cooking

Preparations and Cooking Instructions

THAW MUFFINS OVERNIGHT AND SERVE

Handling Instructions

Keep Frozen

Serving Suggestions:

Serve for breakfast grab and go, in the classroom, or as an afternoon snack.

Nutrition Facts

1 Servings Per Container

Serving Size (113gr)

Amount Per Serving

Calories 380

		% Daily Value *
Total Fat	14g	22%
Saturated Fat	3.5g	18%
Trans Fat	g	
Cholesterol	25mg	8%
Sodium	230mg	10%
Total Carbohydrate	59g	20%
Dietary Fiber	4g	16%
Total Sugars	31g	
Includes 0g Added Sugars		0%
Protein	5g	
Vitamin A		0%
Vitamin C		0%
Calcium		2%
Iron		15%

Supplemental Facts

	% Daily Value *
Vitamin D	3.48mcg 0%
Folic Acid	41.52mcg 10%
Polyunsaturated Fat	6g 0%
Monosaturated Fat	3.5g 0%
Soluble Fiber	.04g 0%
Insoluble Fiber	0g 0%
Iodine	.19mcg 0%
Magnesium	35.98mg 10%
Niacin	1.64mg 8%
Pantothenic Acid	.35mg 4%

CHEF PIERRE

Muffin

MUFFIN, BLUEBERRY WHOLE GRAIN 2 OZ IW FROZEN

6791461



48/2 OZ

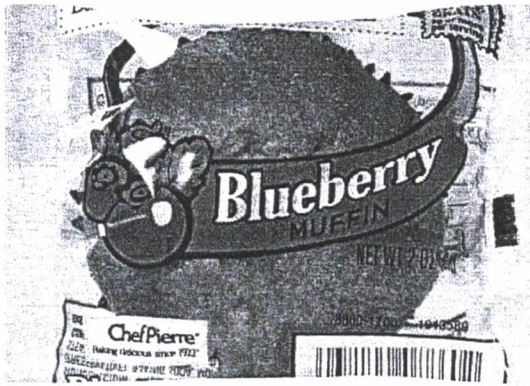
ADD TO ORDER

Quantity Available

CS: 154

Next Expected Restock

07/21



Product Description

Additional Description

Made with sweet, juicy blueberries in a whole grain-rich muffin base to meet new USDA meal guidelines.

Ingredients

INGREDIENTS: WHEAT FLOUR WHOLE WHEAT FLOUR, ENRICHED BLEACHED FLOUR WHEAT FLOUR, NIACIN, IRON, THIAMINE MONONITRATE, RIBOFLAVIN, FOLIC ACID, SUGAR, WATER, VEGETABLE OIL SOYBEAN, CANOLA, BLUEBERRIES, EGGS, CONTAINS 2 OR LESS: MALTODEXTRIN, BAKING POWDER CORN STARCH, SODIUM ALUMINUM PHOSPHATE, SODIUM CARBONATE AND MONOCALCIUM PHOSPHATE, MODIFIED CORN STARCH, SALT, POTASSIUM SORBATE PRESERVATIVE, BAKING SODA, MONO- AND DIGLYCERIDES, XANTHAN GUM, MALIC ACID, SODIUM STEAROYL LACTYLATE, NATURAL AND ARTIFICIAL FLAVORS. CONTAINS: WHEAT, EGGS

Product Information

Class: 26 - GROCERY, REF & FZN

Category: 218 - MUFFINS & BREAKFAST PASTRY, REF & FZN

Group: 1446 - MUFFINS, THAW & SERVE, FROZEN

Manufacturer Information

SARA LEE FROZEN BAKERY LLC

Manufacturer Product #: 08860

Preparation & Cooking

Preparations and Cooking Instructions

THAWING DIRECTIONS: Thaw whole shipper overnight. OR: Remove muffins from shipper. Thaw wrapped muffins in single layer at room temperature about 4 hours. MICROWAVE HEATING (1000 WATT HIGH

Nutrition Facts

1 Servings Per Container

Serving Size (57gr)

Amount Per Serving

Calories 190

		% Daily Value *
Total Fat	7g	11%
Saturated Fat	1g	5%
Trans Fat	0g	
Cholesterol	10mg	3%
Sodium	135mg	6%
Total Carbohydrate	30g	10%
Dietary Fiber	1g	4%
Total Sugars	15g	
Includes 0g Added Sugars		0%
Protein	2g	
Vitamin A		0%
Vitamin C		0%
Calcium		0%
Iron		4%

Supplemental Facts

	% Daily Value *
Folic Acid 21.47mcg	0%
Phosphorus 45.99mg	0%
Polyunsaturated Fat 3.5g	0%
Monosaturated Fat 1.5g	0%



CHEF PIERRE

Muffin

MUFFIN, DOUBLE CHOCOLATE WHOLE GRAIN 2 OZ IW
FROZEN

6759062



48/2 OZ

ADD TO ORDER

Quantity Available

CS: 126

Next Expected Restock

07/21

Product Description

Additional Description

SL IWMUF WG DBL CHOC 48/2OZ

Ingredients

INGREDIENTS: WHEAT FLOUR WHOLE WHEAT FLOUR, ENRICHED BLEACHED FLOUR WHEAT FLOUR, NIACIN, IRON, THIAMINE MONONITRATE, RIBOFLAVIN, FOLIC ACID, WATER, SUGAR, VEGETABLE OIL SOYBEAN, CANOLA, SEMI-SWEET CHOCOLATE SUGAR, CHOCOLATE LIQUOR, COCOA BUTTER, SOY LECITHIN, VANILLA, EGGS, COCOA PROCESSED WITH ALKALI, CONTAINS 2 OR LESS: POTASSIUM SORBATE PRESERVATIVE, LEAVENING BAKING SODA, SODIUM ALUMINUM PHOSPHATE, MONOCALCIUM PHOSPHATE, MODIFIED CORN STARCH, CORN STARCH, LACTYLIC OLEATE, SALT, MONO- AND DIGLYCERIDES, XANTHAN GUM, SORBOL LACTYLATE, ARTIFICIAL FLAVOR, ENZYME, WHEY. CONTAINS: WHEAT, SOY, EGGS,

Product Information

Class: 26 - GROCERY, REF & FZN

Category: 218 - MUFFINS & BREAKFAST PASTRY, REF & FZN

Group: 1446 - MUFFINS, THAW & SERVE, FROZEN

Manufacturer Information

SARA LEE FROZEN BAKERY LLC

Manufacturer Product #: 08862

Preparation & Cooking

Preparations and Cooking Instructions

Thaw and serve.

Nutrition Facts

1 Servings Per Container

Serving Size (57gr)

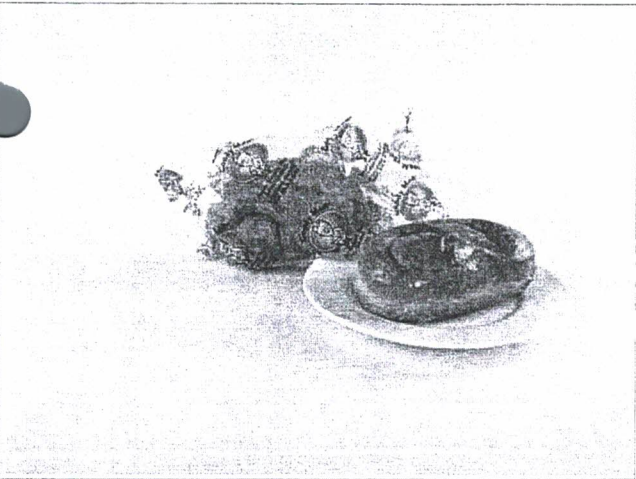
Amount Per Serving

Calories 180

		% Daily Value *
Total Fat	6g	9%
Saturated Fat	1.5g	8%
Trans Fat	0g	
Cholesterol	10mg	3%
Sodium	105mg	4%
Total Carbohydrate	27g	9%
Dietary Fiber	2g	8%
Total Sugars	14g	
Includes 0g Added Sugars		0%
Protein	3g	
Vitamin A		0%
Vitamin C		0%
Calcium		0%
Iron		8%

Supplemental Facts

		% Daily Value *
Vitamin D	1.62mcg	0%
Folic Acid	19.28mcg	5%
Phosphorus	46.43mg	4%



SUPER BAKERY

Honey Bun

HONEY BUN, WHOLE-GRAIN-RICH GLAZED 2.75 OZ
THAW & SERVE FROZEN IW GOODYBUN

561167



ADD TO ORDER

Quantity Available
CS: 365

Next Expected Restock
07/22

Product Description

Additional Description

BAKED HONEY BUN. GOODYBUN KOSHER K DAIRY. 51% OR MORE WHOLE GRAIN RICH.

Ingredients

INGREDIENTS: WHOLE WHEAT FLOUR, ENRICHED FLOUR WHEAT FLOUR, MALTED BARLEY FLOUR, NIACIN, IRON, THIAMINE MONONITRATE, RIBOFLAVIN, FOLIC ACID, WATER, ANULATED SUGAR, VEGETABLE OIL MAY CONTAIN ONE OR MORE OF THE FOLLOWING: M OIL, PALM OIL AND SOYBEAN OIL WITH CITRIC ACID ADDED AS A PRESERVATIVE, RESTERIFIED SOY BEAN OIL, PALM OIL, SOYBEAN OIL, YEAST, CINNAMON, SALT, WHEY, DEFATTED SOY FLOUR, VITAL WHEAT GLUET, MONO-AND DIGLYCERIDES, CORN STARCH, NONFAT DRY MILK, SODIUM ACID PYROPHOSPATE, YELLOW CORN FLOUR, NON FAT DRY MILK, SODIUM BICARBONATE, SODIUM STEAROYL, LACTYLATE, CALCIUM CARBONATE, AGAR, EXTRACTS OF ANNATTO TUMERIC, EGGS.

Product Information

Class: 26 - GROCERY, REF & FZN

Category: 218 - MUFFINS & BREAKFAST PASTRY, REF & FZN

Group: 1461 - SWEET ROLL, THAW & SERVE, FROZEN

Manufacturer Information

SUPER BAKERY

Manufacturer Product #: 6060

Preparation & Cooking

Preparations and Cooking Instructions

Nutrition Facts

1 Servings Per Container		
Serving Size		(2.8oz)
Amount Per Serving		
Calories		240
		% Daily Value *
Total Fat	11g	14%
Saturated Fat	4.5g	23%
Trans Fat	g	
Cholesterol	0mg	0%
Sodium	270mg	12%
Total Carbohydrate	34g	12%
Dietary Fiber	3g	11%
Total Sugars	10g	
Includes 0g Added Sugars		0%
Protein	5g	
Vitamin A		0%
Vitamin C		0%
Calcium		2%
Iron		6%

Supplemental Facts

	% Daily Value *
Potassium 102mg	2%

* The % Daily Value (DV) tells you how much a nutrient in a serving of food contributes to a daily diet. 2,000 calories a day is



Product Code: 37722

FARM RICH FRENCH TOAST STICKS WHOLE GRAIN

Farm Rich® whole grain rich French toast sticks. Four pieces meet 2 oz eq grain for school meal programs. Egg free and produced in a facility that does not process nuts.

SPECIFICATIONS & STORAGE

GTIN:	00041322377227
Case Count:	12
Master Pack:	CASE
Net Case Weight:	24 LB
Gross Case Weight:	25.85 LB
Case Cube:	2.069
Pallet Pattern:	10 TI x 4 HI (40 Cases/Pallet)
Serving Size:	4 pieces (91g)
Shelf Life from Manufacture:	540 DAYS
Storage Method:	Keep Frozen
Shelf Life Refrigerated, Prepared:	0 DAYS
Shelf Life Ambient, Prepared:	0 DAYS
Shelf Life Refrigerated, Thawed:	N/A
Shelf Life Ambient, Thawed:	N/A
Master Unit Size:	2 LB
Case Dimensions:	16.0 IN L x 12.0 IN W x 18.62 IN H

PRODUCT INGREDIENTS

BREAD (WHOLE WHEAT FLOUR, WATER, ENRICHED WHEAT FLOUR [WHEAT FLOUR, MALTED BARLEY FLOUR, NIACIN, REDUCED IRON, THIAMINE MONONITRATE, RIBOFLAVIN, FOLIC ACID], WHEAT GLUTEN, SUGAR, YEAST, SALT, SOYBEAN OIL, CULTURED WHEAT FLOUR, VINEGAR, SOY LECITHIN, ASCORBIC ACID, ENZYME), WATER, WHOLE WHEAT FLOUR, SOYBEAN OIL, SUGAR, ENRICHED YELLOW CORN FLOUR (YELLOW CORN FLOUR, NIACIN, IRON AS FERROUS SULFATE, THIAMINE MONONITRATE, RIBOFLAVIN, FOLIC ACID), ENRICHED WHEAT FLOUR (WHEAT FLOUR, NIACIN, REDUCED IRON, THIAMINE MONONITRATE, RIBOFLAVIN, FOLIC ACID), CONTAINS 2% OR LESS OF EACH OF THE FOLLOWING: CARRAGEENAN, DEXTROSE, DRIED YEAST, GUM ARABIC, LEAVENING (BAKING SODA, MONOCALCIUM PHOSPHATE), NATURAL AND ARTIFICIAL FLAVOR, SALT, SOY FLOUR, SOY LECITHIN.

ALLERGENS

CONTAINS: SOY, WHEAT. CONTAINS A BIOENGINEERED FOOD INGREDIENT

TIPS & HANDLING

Cooking Instructions: For food safety, quality and thorough cooking, please follow the instructions below. Keep frozen until ready to prepare. Product is not ready to eat until fully cooked to internal temperature of 165 F. Due to differences in appliances, cooking times may vary and require adjustment. Caution - Product will be hot! CONVECTION OVEN: 1. Preheat oven to 350°F. 2. Arrange product in a single layer on lined baking sheet. 3. Bake for 10-11 minutes (full tray). If baking more than one tray, longer cooking time may be required.

Nutrition Facts

9 Servings Per Container

Serving Size 4 pieces (91g)

Amount Per Serving

Calories

260

% Daily Value*

Total Fat 10g	12%
Saturated Fat 1.5g	8%
Trans Fat 0g	
Cholesterol 0mg	0%
Sodium 300mg	13%
Total Carbohydrate 38g	14%
Dietary Fiber 3g	12%
Total Sugars 9g	
Includes 8g Added Sugars	17%
Protein 6g	12%
Vitamin D 0mcg	0%
Calcium 40mg	4%
Iron 2mg	10%
Potassium 150mg	4%

* The % Daily Value (dv) tells you how much a nutrient in a serving of food contributes to a daily diet. 2,000 calories a day is used for general nutrition advice.

100g Nutrition Facts

Calories	288.827
Calories From Fat	94.717
Calories From Saturated Fat	15.414
Protein	6.785 G
Carbohydrates	41.742 G
Sugars	9.74 G
Added Sugars	9.146 G
Sugar Alcohol	0 G
Water	40.074 G
Fat	10.524 G
Saturates	1.713 G
Trans Fat	0.157 G
Cholesterol	0 MG
Fiber	3.61 G
Minerals	
Ash	0.875 G
Calcium	45.342 MG
Iron	2.15 MG
Sodium	332.394 MG
Thiamin	0.143 MG
Riboflavin	0.091 MG
Niacin	1.349 MG
Potassium	166.471 MG
Vitamin A	33.593 IU
Vitamin C	0.075 MG
Vitamin D	0.007 MCG
Folic Acid	24.01 MCG

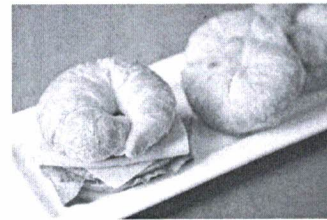
CASE GTIN



00041322377227



**134 - Whole Grain Margarine
Croissant Sliced Fully Curved
1.25oz**



Nutrition Facts

Serving Size 1 Croissant (35g)
Servings Per Container 210

Amount Per Serving

Calories 110

	% Daily Value*
Total Fat 4 g	5%
Saturated Fat 1.5 g	8%
Trans Fat 0 g	
Cholesterol 0 mg	0%
Sodium 105 mg	5%
Total Carbohydrate 16 g	6%
Dietary Fiber 1 g	5%
Sugars 2 g	
Incl. 2 g Added Sugars	3%
Protein 3 g	

Vitamin D 0% • Potassium 0%
Calcium 2% • Iron 4%

*Percent Daily Values are based on a 2,000 calorie diet.

10.92 grams Whole Grain per Roll (56%)
8.58 grams Enriched Grain per Roll (44%)
1.0 OZ EQ per Roll

Ingredients

White Whole Wheat Flour, Enriched Wheat Flour (Unbleached Wheat Flour, Malted Barley Flour, Niacin, Reduced Iron, Thiamine Mononitrate, Riboflavin, Folic Acid), Water, Margarine (Palm Oil, Water, Soybean Oil, Sugar, Soybean Lecithin [Soy], Monoglycerides, Potassium Sorbate, Citric Acid, Natural Flavor, Beta Carotene [Color], Vitamin A Palmitate added), Brown Sugar, Contains 2% or less of: Non Fat Dry Milk, Dried Whey, Yeast, Malt Extract, Honey, Salt, Calcium Propionate, Egg, Corn Starch, Enzyme.

Product Specifications

GTIN	10070565001238	Case Gross Weight	21 lbs.
UPC	070565001231	Cube	3.1
Case Pack	210/1.25oz	Tie x High	5 x 6
Shelf Life Frozen	365 Days	Smart Snack	No
Shelf Life Ambient	7 Days		
Case Dimensions	L24.50"xW16.75"xH13.25"		

Handling

Product delivered frozen and should be stored at 0 to -10 degrees Fahrenheit

Preparation

Thaw & Serve. Remove product from freezer the night prior to serving.

Allergen Info

CONTAINS:
Eggs, Milk, Soy, Wheat

Bid Specification

Hadley Farms Whole Grain Croissant # 134. Portion must contain at least 110 calories, with no more than 105mg of sodium and 2g of sugar. Must meet 1.0oz grain equivalent. Must be manufactured in a Nut Free facility. Must contain zero Artificial colors and flavors.
Acceptable Brand: Hadley Farms Bakery Item#134.

Cinnamon Swirls, WG, IW (#1687)



Looking for something exciting for breakfast? How about just as a snack? Why not try our whole grain cinnamon swirls?! They are great anytime you're in the mood for something sweet.

General Specifications

Pack: 72/2.5 oz
Kosher: OK
Shelf Life: 5 days at ambient. 14 days refrigerated. 365 days frozen.
Status: Available

SCHOOL SPECIFICATIONS

Nutritional Ratio: 28-7-27

Grain (ounce equivalents): 2.25
Whole Grain: 18.5g, 51%
Enriched Flour: 17.5g
Combined Flour 36g

18G
WHOLE
GRAINS
PER SERVING

Nutrition Facts

1 Cinnamon Roll (71g)
Serving size

Amount per serving

Calories **260**

% Daily Value*

Total Fat	8g	10%
Saturated Fat	2g	12%
Trans Fat	0g	
Cholesterol	10mg	3%
Sodium	105mg	4%
Total Carbohydrate	41g	15%
Dietary Fiber	3g	11%
Sugars	19g	
Includes 19g Added Sugars		
Protein	6g	
Vitamin D	0mcg	0%
Calcium	45mg	4%
Iron	1.5mg	8%
Potassium	115mg	4%
Folate	36mcg	10%

* The % Daily Value (DV) tells you how much a nutrient in a serving of food contributes to a daily diet. 2,000 calories a day is used for general nutrition advice.

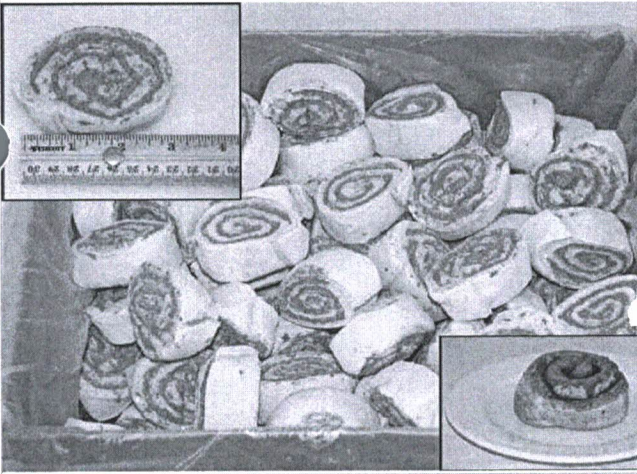
INGREDIENTS

Whole Grain White Flour, Enriched Unbleached Wheat Flour (Wheat Flour, Malted Barley Flour, Niacin, Reduced Iron, Thiamine Mononitrate, Riboflavin, Folic Acid), Sugar, Water, Palm Oil, Soybean Oil, Eggs, Cinnamon, Palm Stearin, Yeast, Natural Vanilla Flavor, Wheat Gluten, Instant Starch, Natural Butter Flavor, Salt, Soy Protein Concentrate, Propylene Glycol, Xanthan Gum, Mono and Diglycerides, Guar Gum, Corn Syrup Solids, Silicon Dioxide, Calcium Sulfate, Lactic Acid, Caramel Color (CL 1), Sunflower Lecithin, Calcium Propionate, Annatto, Oleoresin & Turmeric, Corn Starch, Sodium Bicarbonate, Sodium Aluminum Sulfate, Monocalcium Phosphate.

ALLERGENS & DISCLOSURES

Contains egg, soy, and wheat ingredients. This product is processed in a facility that produces products with milk and sesame.

Contains bioengineered food ingredients.
This product is produced in a nut-free facility.



Product Description

Additional Description

2 BREAD EQUIVALENT. FROZEN CINNAMON ROLLS IN AN EASY-TO-USE FREEZER TO OVEN FORMAT. SOFT, TENDER DOUGH WRAPPED AROUND A SWEET CINNAMON FILLING WITH A HOME-STYLE FLAVOR.

Ingredients

ENRICHED FLOUR WHEAT FLOUR, MALTED BARLEY FLOUR, NIACIN, IRON, THIAMIN MONONITRATE, RIBOFLAVIN, FOLIC ACID, WATER, SUGAR, PALM OIL, MARGARINE PALM OIL, WATER, SOYBEAN OIL, SALT, MONO AND DIGLYCERIDES, SOY LECITHIN, NATURAL FLAVOR, BETA CAROTENE COLOR, VITAMIN A PALMITATE, SOYBEAN OIL, HIGH FRUCTOSE CORN SYRUP, YEAST, CINNAMON, MONOGLYCERIDES, WHEAT PROTEIN ISOLATE, SODIUM CASEINATE, MODIFIED CORN STARCH, DATEM, GLUCONO DELTA-LACTONE, BAKING SODA, SALT, SODIUM ACID PYROPHOSPHATE, MOLASSES, NATURAL FLAVOR, ASCORBIC ACID. CONTAINS WHEAT, MILK AND SOY INGREDIENTS.

Product Information

Class: 26 - GROCERY, REF & FZN
Category: 218 - MUFFINS & BREAKFAST PASTRY, REF & FZN
Group: 1463 - SWEET ROLL, DOUGH, FROZEN

Manufacturer Information

GENERAL MILLS SALES INC
Manufacturer Product #: 94562-05358

Preparation & Cooking

Preparations and Cooking Instructions

STANDARD PREP: PLACE FROZEN CINNAMON ROLLS ON PARCHMENT LINED FULL SHEET PAN. BAKE TIME 20-24 MINUTES IN 300 DEGREES F CONVECTION OVEN. SEE PACKAGE FOR COMPLETE BAKING INSTRUCTIONS.

Handling Instructions

"100-3 oz cinnamon rolls per case. ""Best if Used By"" code date. Store in freezer 0 degrees F or colder."

Serving Suggestions:

Standard directions will produce 100-3 oz cinnamon rolls. Cinnamon roll dough can also be used to produce bread pudding, cobbler, french toast, and more.

Shipping Information

Physical Attributes			
Gross Weight:	22.5 LB	Length:	15.93 IN
Net Weight:	18.75 LB	Cube:	.859 CF
Height:	7.81 IN	Catch Weight:	No
Width:	11.93 IN		

Storage Information	
USF Storage:	FROZEN 0
Min. Temperature:	-10 F
Max. Temperature:	15 F

PILLSBURY

Dough

DOUGH, ROLL CINNAMON FROZEN

2252286



100/3 OZ

ADD TO ORDER

Quantity Available
CS: 32

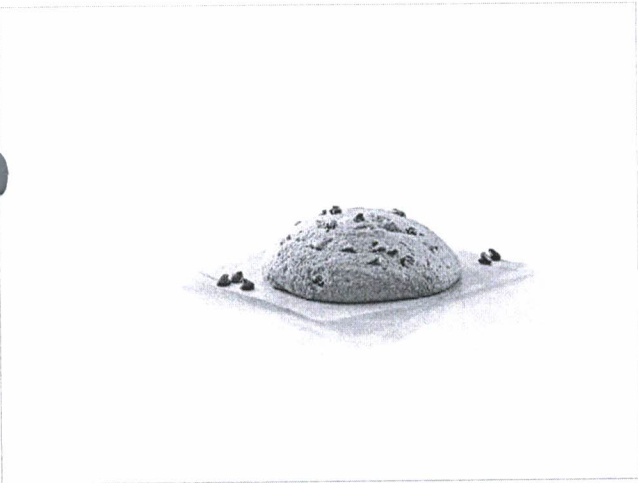
Nutrition Facts

202 Servings Per Container		
Serving Size		(42gr)
Amount Per Serving		
Calories		130
		% Daily Value *
Total Fat	5g	7%
Saturated Fat	2.5g	12%
Trans Fat	g	
Cholesterol	0mg	0%
Sodium	210mg	9%
Total Carbohydrate	18g	7%
Dietary Fiber	1g	3%
Total Sugars	5g	
Includes 0g Added Sugars		0%
Protein	3g	
Vitamin A		0%
Vitamin C		0%
Calcium		0%
Iron		6%

Supplemental Facts

		% Daily Value *
Vitamin D	0mcg	0%
Potassium	0mg	0%

* The % Daily Value (DV) tells you how much a nutrient in a serving of food contributes to a daily diet. 2,000 calories a day is used for general nutrition advice.



PILLSBURY

Batter

BATTER, MUFFIN TOP CHOCOLATE CHOCOLATE CHIP
WHOLE-GRAIN-RICH LAYER PACK FRO

4677863

112/2.1 OZ

ADD TO ORDER

Quantity Available
CS: Out of Stock

Next Expected Restock
07/28

Product Description

Additional Description

PLACE & BAKE FROZEN MUFFIN TOP BATTER AT LEAST 51% WHOLE GRAIN RICH.

Ingredients

WHOLE WHEAT FLOUR, SUGAR, WATER, PALM OIL, EGGS, ENRICHED FLOUR BLEACHED WHEAT FLOUR, NIACIN, IRON, THIAMIN MONONITRATE, RIBOFLAVIN, FOLIC ACID, SEMISWEET CHOCOLATE CHIPS SUGAR, CHOCOLATE LIQUOR, COCOA BUTTER, SOY LECITHIN, NATURAL FLAVOR, LIQUID INVERT SUGAR. CONTAINS 2 OR LESS OF: SOYBEAN OIL, MODIFIED CORN STARCH, SODIUM ALUMINUM PHOSPHATE, BAKING SODA, SALT, SORBITAN MONOSTEARATE, NONFAT MILK, XANTHAN GUM, LOCUST BEAN GUM, POLYSORBATE 60, NATURAL FLAVOR, CORN STARCH, MONO AND DIGLYCERIDES. CONTAINS WHEAT, EGG, MILK AND SOY INGREDIENTS.

Product Information

Class: 26 - GROCERY, REF & FZN

Category: 218 - MUFFINS & BREAKFAST PASTRY, REF & FZN

Group: 1445 - MUFFIN BATTER, FROZEN

Manufacturer Information

GENERAL MILLS SALES INC

Manufacturer Product #: 94562-11114

Preparation & Cooking

Preparations and Cooking Instructions

PLACE FROZEN MUFFIN DOUGH ON A FULL PARCHMENT LINED BAKING SHEET (3X5). IN A STANDARD/REEL OVEN, BAKE 15 MUFFIN TOPS AT 350°F FOR 20-24 MINUTES. IN A CONVECTION OVEN, BAKE 15 MUFFIN TOPS AT 300°F FOR 17-21 MINUTES. BAKE TIMES WILL VARY BY OVEN TYPE AND QUANTITY OF PRODUCT IN OVEN. MUFFIN TOPS ARE DONE WHEN CENTER SPRINGS BACK WHEN LIGHTLY TOUCHED. FOR EASIER REMOVAL OF BAKED MUFFIN TOPS, SPRAY PARCHMENT PAPER WITH PAN RELEASE BEFORE PLACING ON BAKING SHEET.

Handling Instructions

"112 units, 2.1 oz pucks. ""Best if Used By"" code date. Store in freezer 0 degrees F or colder."

Serving Suggestions:

See packaging for serving suggestions

Shipping Information

Physical Attributes				Storage Information	
Gross Weight:	17 LB	Length:	13.06 IN	USF Storage:	FROZEN 0
Net Weight:	14.7 LB	Cube:	.64 CF	Min. Temperature:	-10 fa
Height:	6.88 IN	Catch Weight:	No	Max. Temperature:	15 fa
Width:	12.31 IN				

Nutrition Facts

112 Servings Per Container		
Serving Size		(59gr)
Amount Per Serving		
Calories		220
		% Daily Value *
Total Fat	11g	14%
Saturated Fat	5g	25%
Trans Fat	g	
Cholesterol	30mg	10%
Sodium	135mg	6%
Total Carbohydrate	28g	10%
Dietary Fiber	2g	6%
Total Sugars	15g	
Includes 0g Added Sugars		0%
Protein	3g	
Vitamin A		0%
Vitamin C		0%
Calcium		0%
Iron		6%

Supplemental Facts

	% Daily Value *
Vitamin D 0mcg	0%
Potassium 0mg	0%

* The % Daily Value (DV) tells you how much a nutrient in a serving of food contributes to a daily diet. 2,000 calories a day is used for general nutrition advice.



PILLSBURY

Batter

BATTER, MUFFIN CHOCOLATE CHOCOLATE CHIP LAYER
PACK FROZEN PLACE & BAKE

566380

216/1.5 OZ

Quantity Available

CS: Out of Stock

Product Description

Additional Description

Chocolate chocolate chip frozen muffin batter in a pre-portioned, easy freezer-to-oven format. No scooping required - just place, bake and serve.

Ingredients

SUGAR, ENRICHED FLOUR BLEACHED (WHEAT FLOUR, MALTED BARLEY FLOUR, NIACIN, IRON, THIAMIN MONONITRATE, RIBOFLAVIN, FOLIC ACID), PALM OIL, WATER, EGGS, SEMISWEET CHOCOLATE CHIPS (SUGAR, CHOCOLATE LIQUOR, COCOA BUTTER, SOY LECITHIN, NATURAL FLAVOR), COCOA PROCESSED WITH ALKALI, SOYBEAN OIL. CONTAINS 2% OR LESS OF: MODIFIED CORN STARCH, MODIFIED WHEY, SODIUM ALUMINUM PHOSPHATE, VITAL WHEAT GLUTEN, BAKING SODA, SALT, SORBITAN MONOSTEARATE, NONFAT MILK, XANTHAN GUM, LOCUST BEAN GUM, POLYSORBATE 60, CORN STARCH, MONO AND DIGLYCERIDES.

Product Information

Class: 26 - GROCERY, REF & FZN

Category: 218 - MUFFINS & BREAKFAST PASTRY, REF & FZN

Group: 1445 - MUFFIN BATTER, FROZEN

Manufacturer Information

GENERAL MILLS SALES INC
Manufacturer Product #: 131661000

Preparation & Cooking

Nutrition Facts

216 Servings Per Container

Serving Size (43gr)

Amount Per Serving

Calories 150

% Daily Value *

Total Fat	8g	11%
Saturated Fat	3.5g	18%
Trans Fat	0g	
Cholesterol	25mg	8%
Sodium	120mg	5%
Total Carbohydrate	17g	6%
Dietary Fiber	1g	3%
Total Sugars	10g	
Includes 0g Added Sugars		0%
Protein	2g	
Vitamin A		0%
Vitamin C		0%
Calcium		0%
Iron		6%

Supplemental Facts

% Daily Value *

Vitamin D	0mcg	0%
Potassium	0mg	0%